

# AIS WatchMate

# AIS Display and Collision Warning System

built for sailors by sailors



**Alarms based on closest point of approach (CPA) or range**



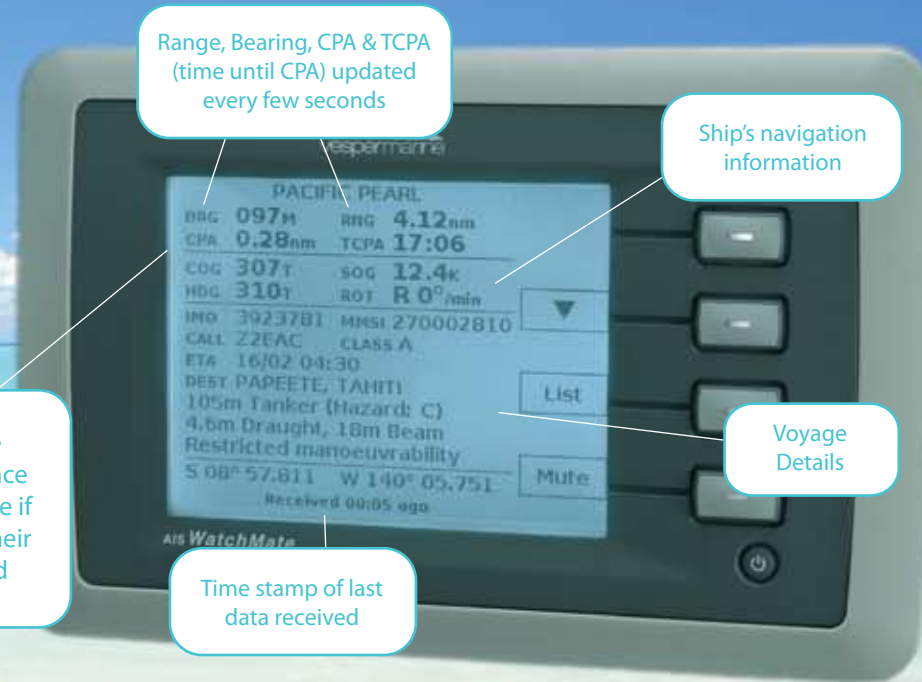
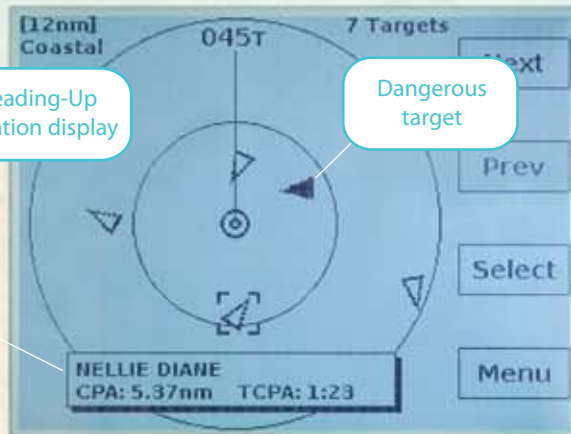
**Prioritised identification of targets that pose the greatest risk**



**Filters eliminate false alarms when navigating in crowded shipping areas**



**Ideal for short handed crews**



**Displays all AIS data plus safety messages & aids to navigation**



**Stand alone display unit works with any AIS receiver or transponder**



## Benefits and Features

**Alarms** alert you well in advance if you are in danger of a collision and an external alarm connection is also provided

**Unique graphic** shows overall situation plus additional screen shows whether a target will pass ahead or astern

**Easy to interpret** display immediately shows all the info you need

**Increased safety** offshore or in busy shipping areas

**Safety at night** or in bad weather when it is difficult to see ship's lights or direction

**Positive identification** of targets with the vessel id and name for voice and DSC communication

**AIS allows you to "see"** around islands and headlands when radar is blocked

**Customisable** profiles (anchored, harbour, coastal and offshore) quickly tailor alarm settings to fit your sailing environment

**Simple to use** with on-screen help for every setting

**Operates on very low power** so it can be left running at all times

**No computer** or chart plotter is needed

## AIS WatchMate<sup>®</sup>

collision warning system

"The AIS WatchMate is the most cost-effective marine safety advance in decades. Given the choice of it or a radar, I'd pick the AIS WatchMate, at a fraction of the cost."

Cap'n Fatty Goodlander, *Wild Card*, Singapore

"The AIS WatchMate runs like a charm and is more than I imagined. Hassle free."

Ken J., *Panche*, Australia

"A great piece of safety gear! It has proven to be so simple and intuitive to use. We couldn't be more satisfied."

Bob and Laurie W., *Shearwater*, Fiji

"The system was very simple to install and works flawlessly. I use your AIS WatchMate in place of a radar. It has proved to be a lifesaver on several occasions. Literally!"

Bob A., *Mischief*, St. Petersburg, Florida

"The AIS WatchMate is absolutely magical! We can make course corrections while the target is still well beyond radar range. In addition, the names and call signs make calling on the radio easy."

Tom W. and Maryann B., *Linda*, Mexico

## AIS WatchMate<sup>®</sup>

collision warning system

vespermarine  
built for sailors by sailors

[www.vespermarine.com](http://www.vespermarine.com)  
[info@vespermarine.com](mailto:info@vespermarine.com)

Increase your  
**safety**  
around the world